



**QUESTIONS? CONTACT US!**

2488 HIGHWAY 33

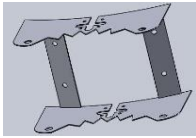
RUSTON, LA 71270

318-255-1834

INFO@ONTIMEFEEDERS.COM

# 80 LB. T POST GRAVITY FEEDER INSTRUCTIONS ITEM# 71800

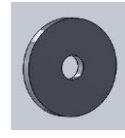
## Hardware



METAL MOUNTING  
BRACKET  
QTY: 1



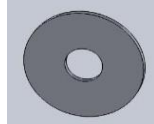
5/16" X 1" BOLT  
QTY: 4



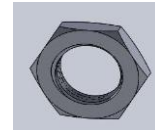
LARGE BLACK  
PLASTIC WASHER  
QTY: 4



CURVED METAL PIECE  
QTY: 2



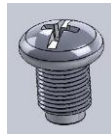
1" METAL WASHER  
QTY: 4



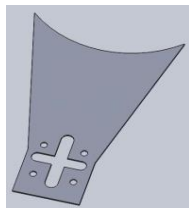
5/16" NUT  
QTY: 4



RETAINER  
QTY: 3



1/2" PHILLIPS HEAD  
SCREW  
QTY: 6



WISHBONE BRACKET  
QTY: 1

For an Instructional Video on  
Installation, please scan the QR  
Code, or visit On Time Feeders'  
You Tube Channel.





ON TIME WILDLIFE FEEDERS IS NOT RESPONSIBLE FOR VARMINT DAMAGE TO YOUR FEEDER UNIT. HEAVY SCREEN WIRE IS RECOMMENDED TO SHIELD YOUR UNIT FROM VARMINTS.

# 80 LB. T POST GRAVITY FEEDER INSTRUCTIONS ITEM# 71800

## INSTALLATION OF THE METAL MOUNTING BRACKET

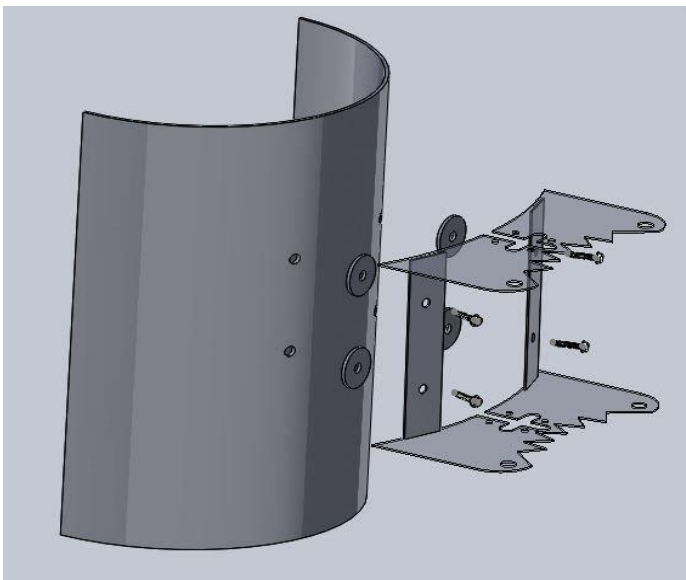


FIG.1: EXTERIOR VIEW

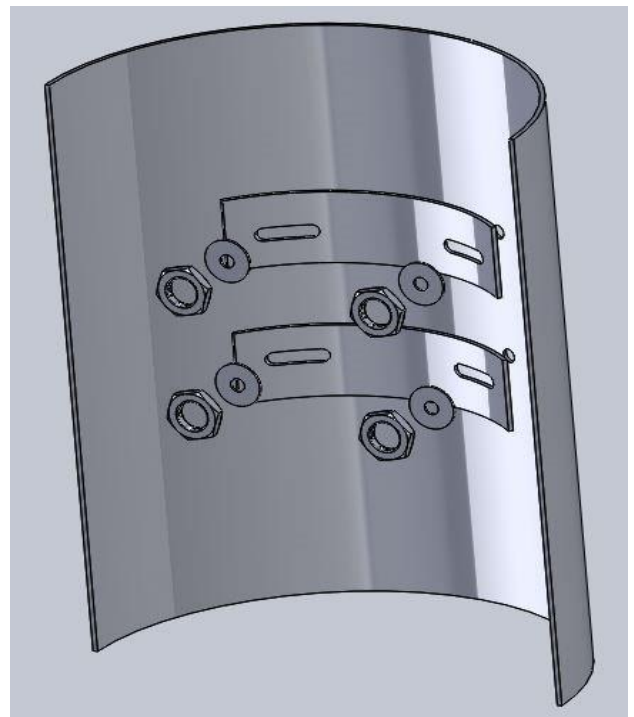


FIG.2: INTERIOR VIEW

### STEP 1 -- SEE FIG. 1

Lay the hopper down and place the METAL MOUNTING BRACKET onto the back of the hopper. Line the four holes of the bracket with the four holes on the back of the hopper.

Slide one LARGE BLACK PLASTIC WASHER between the METAL MOUNTING BRACKET and the hopper.

Push one of the four 5/16"x1" BOLTS through the bracket and plastic washer into the hopper.

Repeat for the remaining three 5/16"x1" BOLTS and LARGE BLACK PLASTIC WASHERS.

### STEP 2 -- SEE FIG.2

Install the two CURVED METAL PIECES inside the hopper. One will be placed over the top two 5/16"x1" BOLTS, and one will be placed over the bottom two 5/16"x1" BOLTS. Install the four 1" METAL WASHERS one on top of each bolt that is protruding through the CURVED METAL PIECES. Install the four 5/16" NUTS one on each of the 5/16"x1" BOLTS. Tighten all four 5/16" NUTS.



**QUESTIONS? CONTACT US!**

**2488 HIGHWAY 33**

**RUSTON, LA 71270**

**318-255-1834**

**INFO@ONTIMEFEEDERS.COM**

## **80 LB. T POST GRAVITY FEEDER INSTRUCTIONS**

**ITEM# 71800**

### **INSTALLATION OF HOPPER ONTO T POST / TREE**

#### **FOR T POST USE:**

**\*\*\*USE A HEAVY DUTY T POST**

**\*\*\*7 FOOT LENGTH T POST IS RECOMMENDED**

**\*\*\*7 FOOT HEAVY DUTY T POST SHOULD BE PLACED 18-20" INTO THE GROUND**

**\*\*\*BEFORE INSTALLING A T POST INTO THE GROUND CALL TO CHECK FOR UNDERGROUND UTILITIES**

**\*\*\*INSTALLING A T POST IN AREAS WITH UNDERGROUND UTILITIES (GAS, ELECTRICAL, WATER) CAN BE DANGEROUS AND FATAL**

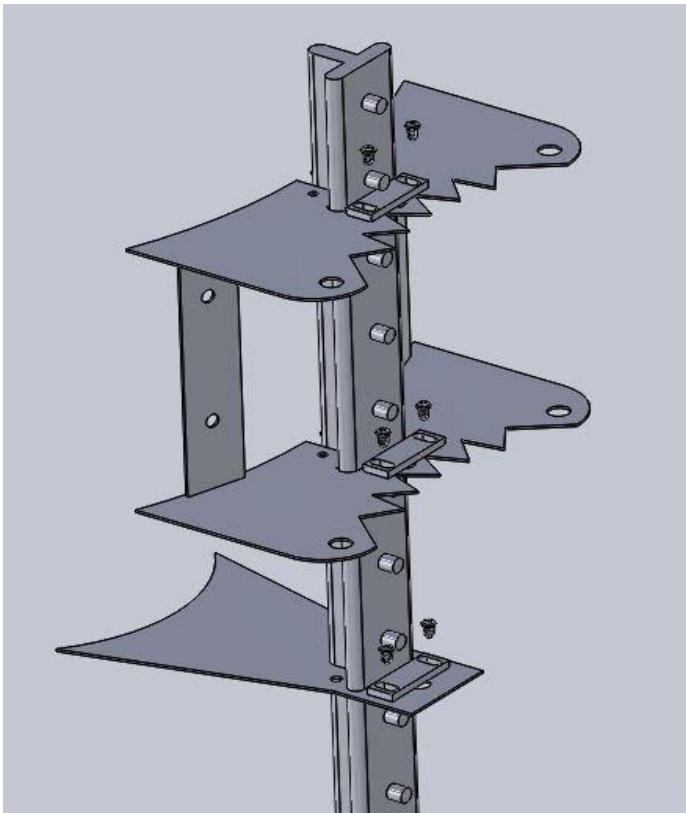


FIG. A

**STEP 1:** Slide the WISHBONE BRACKET onto the T Post.

**STEP 2:** Align the T shaped cutout on the METAL MOUNTING BRACKET on the rear of the hopper with the top of the T Post and slide down to desired height.

**STEP 3:** Place one of the RETAINERS on the top of the METAL MOUNTING BRACKET aligning the oval cutouts of the RETAINER over the two holes in the METAL MOUNTING BRACKET. Use two 1/2" PHILLIPS HEAD SCREWS to attach the RETAINER to the METAL MOUNTING BRACKET. Slide the RETAINER into the T post as far as possible and tighten screws. Repeat **STEP 3** for the bottom of the METAL MOUNTING BRACKET. SEE FIG. A

**STEP 4:** Slide the WISHBONE BRACKET up the T post connecting the curve to the neck of the hopper tube. Place the remaining RETAINER over the two holes in the WISHBONE BRACKET aligning the oval cutouts of the RETAINER over the two holes in the WISHBONE BRACKET. Use two 1/2" PHILLIPS HEAD SCREWS to attach the RETAINER to the WISHBONE BRACKET sliding the RETAINER into the T post as far as possible and tightening the screws.

**STEP 5:** After hopper is secured to T Post/tree slide and twist the nozzle tube onto the neck of the hopper until it locks into place with the feed stop positioned at the bottom.

**FOR TREE USE:** Use nylon straps (not included) in the four corner holes of the METAL MOUNTING BRACKET.